



WET TANTALUM CAPACITORS

THE ULTIMATE RELIABILITY AND PERFORMANCE CHOICE FOR EXTREME APPLICATIONS

KEY FACTORS

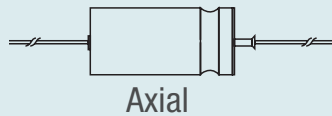


Capacitance
Performance
Energy
Temperature

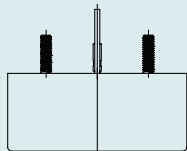
QUALIFICATIONS

- M39006/09/21/22/25/30/31/33
- DLA 06013/06014/06015/06016/20001/20012
- DLA 04003/10004/10011/13017/15005/93026
- CECC 30202/001/002/004/005/801

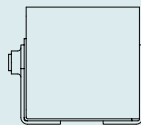
LEAD CONFIGURATIONS



Axial



Radial

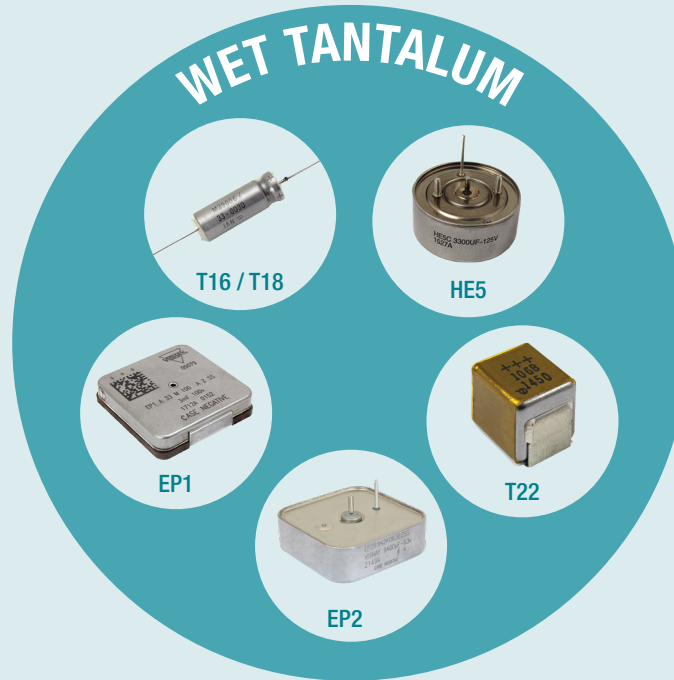


SMD

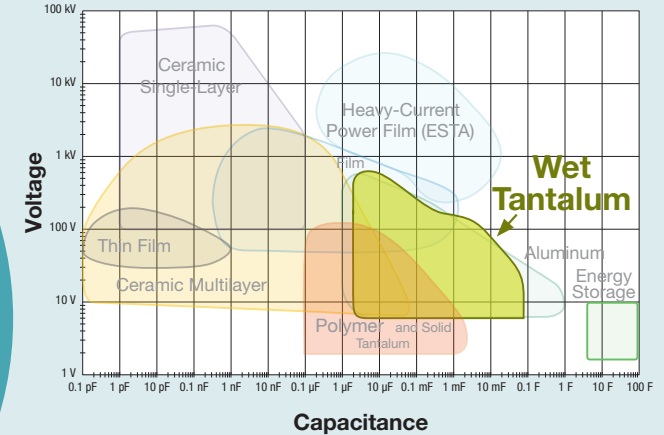
TERMINATION OPTIONS Tin / Lead

Lead (Pb)-free (100 % tin)

RoHS-compliant



VISHAY CAP MAP



APPLICATIONS



AVIONICS

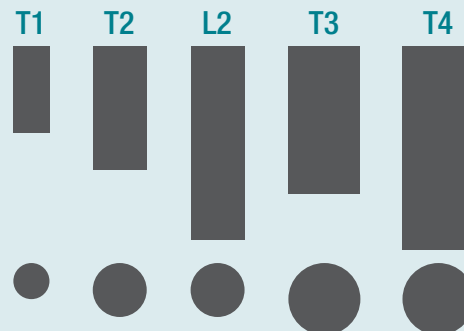


OIL and GAS



SPACE

VISHAY CAPABILITY



Shown at actual size (when viewed or printed at 100 %)

For Technical Questions: tantalum@vishay.com

© 2023 VISHAY INTERTECHNOLOGY, INC. ALL RIGHTS RESERVED.