



# SOLID-STATE RELAYS

## VOR SERIES

# IN A NUTSHELL

**High** reliability and noiseless switching (no click)

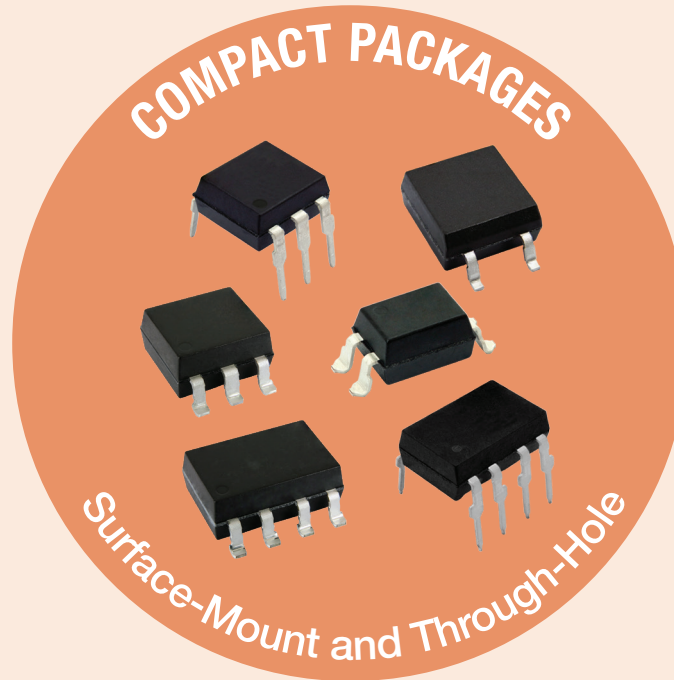


**Tiny footprint** relative to **electro-mechanical relays**

**Fast** switching times



**Low on-resistance**, down to **12 Ω** (typ.)



### APPLICATIONS



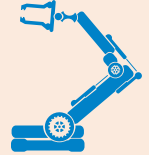
SECURITY SYSTEMS



BATTERY MANAGEMENT



AUTOMATIC MEASUREMENT EQUIPMENT



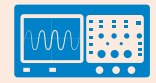
INDUSTRIAL



METERING



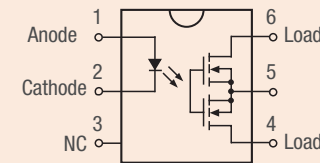
TELECOMMUNICATION



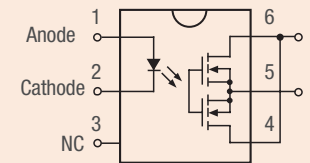
INSTRUMENTATION

### AC AND DC CONFIGURATION WITH SSRs

AC/DC Configuration



DC-Only Configuration



	VOR1121A6	VOR1121B6	VOR2121A8	VOR2121B8	VOR1142M4	VOR1142B4	VOR1142A6	VOR1142B6	VOR2142A8	VOR2142B8
Single / Dual Channel	Single	Single	Dual	Dual	Single	Single	Single	Single	Dual	Dual
Package	DIP-6	SMD-6	DIP-8	SMD-8	SOP-4	SMD-4	DIP-6	SMD-6	DIP-8	SMD-8
Isolation Test Voltage (V <sub>RMS</sub> / 1 min)	5300	5300	5300	5300	3750	5300	5300	5300	5300	5300
Typical On-Resistance (Ω)	12	12	12	12	22	22	22	22	22	22
Load Voltage (V)	250	250	250	250	400	400	400	400	400	400
Typical Turn-On Time (ms)	0.2	0.2	0.2	0.2	0.2	0.13	0.13	0.13	0.13	0.13
Typical Turn-Off Time (ms)	0.03	0.03	0.03	0.03	0.05	0.05	0.05	0.05	0.05	0.05

For Technical Questions: [optocoupleranswers@vishay.com](mailto:optocoupleranswers@vishay.com)

© 2017 VISHAY INTERTECHNOLOGY, INC. ALL RIGHTS RESERVED.