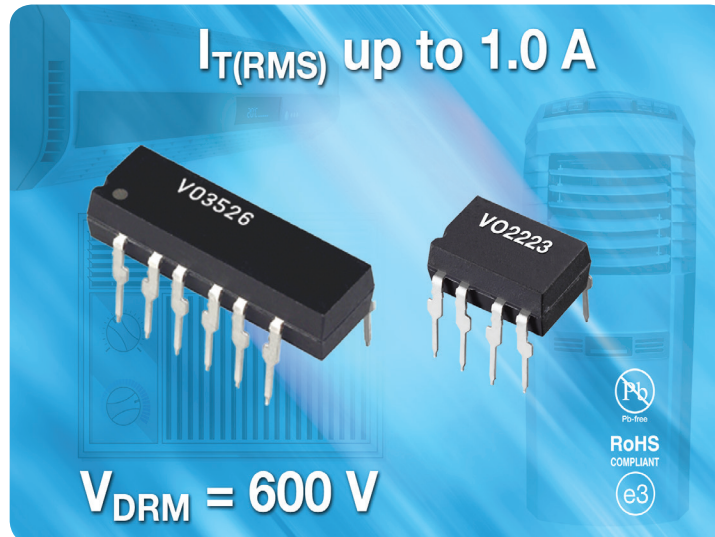




OPTOCOUPLEDERS

VO2223/VO2223A/VO3526

Power Phototriacs



FEATURES

- Integrated phototriac and power TRIAC in DIP-8 and DIP-16 packages
- On-state current up to 1 A_{RMS}, blocking voltage of 600 V_{peak}
- dV/dt of 500 V/μs minimum
- Trigger current of 10 mA

BENEFITS

- DIP-8 package saves 90 % board space compared to discrete component solutions
- Reduces cost
- Drives resistive or inductive loads
- Crosses to industry-standard power phototriac

RESOURCES

- Datasheets:
 - VO2223 <http://www.vishay.com/doc?81166>
 - VO2223A <http://www.vishay.com/doc?81924>
 - VO3526 <http://www.vishay.com/doc?81842>
- For technical support, contact: optocoupleranswers@vishay.com
- Optocoupler products portfolio: <http://www.vishay.com/optocouplers/>
- Optoelectronics products portfolio: <http://www.vishay.com/optoelectronics/>

One of the World's Largest Manufacturers of
Discrete Semiconductors and Passive Components



Optoelectronics - Integrated Phototriac and Power TRIAC in DIP-8, DIP-16 Packages

Power Phototriacs

SAFETY

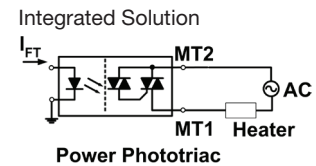
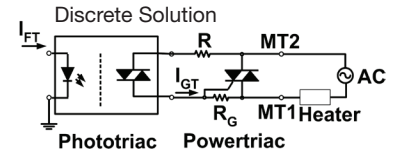
- Certified by key international safety regulatory agencies such as UL, CUL, and VDE

APPLICATIONS

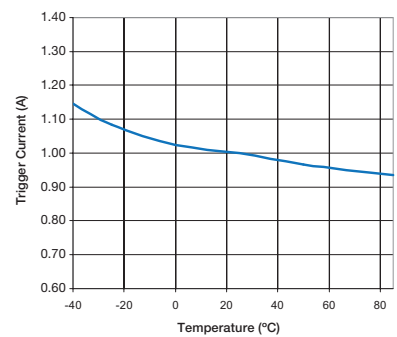
- Household appliances
- AC motor drives
- Solenoid and valve controls
- Office automation equipment
- Temperature (HVAC) and lighting controls

Vishay's NZC power phototriac with dV/dt of 500 V/ μ s complements our existing broad phototriac offering, which includes devices with the highest dV/dt rating in the industry at 10 kV/ μ s.

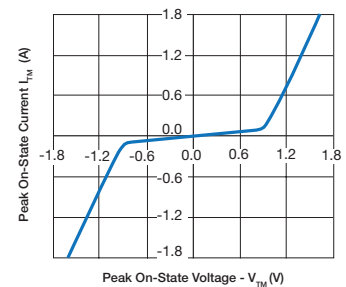
The VO2223/VO2223A and the VO3526 are designed for applications where load current is limited to 1 A_{RMS}. These new devices eliminate the need for an external power TRIAC, saving on board space and costs.



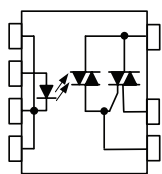
Normalized Trigger Input Current vs Temperature



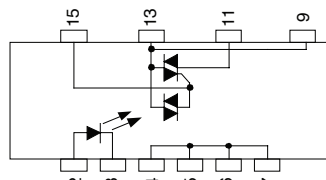
Peak On-State Voltage vs Peak On-State Current



NON-ZERO CROSS POWER PHOTOTRIAC



VO2223/ 2223A



VO3526

I _T LOAD CURRENT	CROSSING TYPE	PRODUCT
0.9 A	NZC	VO2223
1.0 A	NZC	VO2223A
1.0 A	NZC	VO3526