

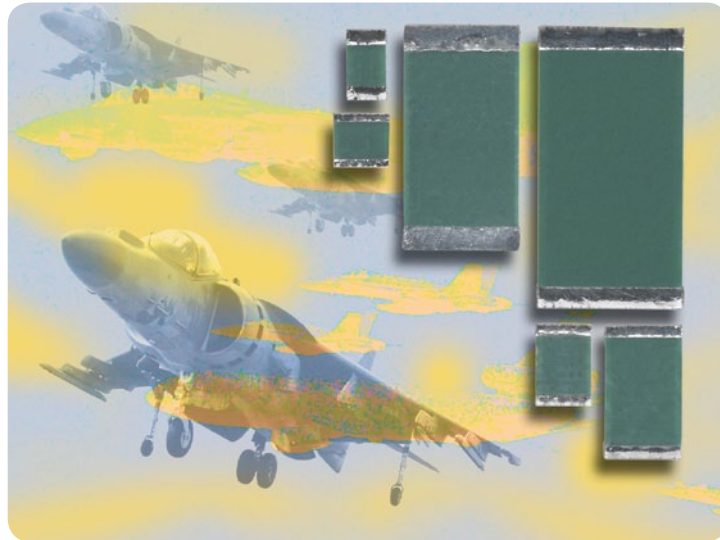


# THICK FILM CHIP RESISTORS

## CHP, HCHP Hybrid



### High-Stability Resistor Chips with Thick Film Technology



#### KEY BENEFITS

- Thick film resistive layer provides wide ohmic range of 0R1 up to 100 M $\Omega$
- Sputtered thin film terminations, with nickel barrier to withstand severe thermal constraints of > 1000 cycles
- 12 case sizes available

#### APPLICATIONS

- Instrumentation
- Calibration
- Power supplies
- RF circuits
- D/A conversion

#### RESOURCES

- Datasheet: CHP, HCHP Hybrid - <http://www.vishay.com/doc?52023>
- For technical questions contact [sfer@vishay.com](mailto:sfer@vishay.com)

Resistors - Thick Film, Robust Terminations

One of the World's Largest Manufacturers of  
Discrete Semiconductors and Passive Components

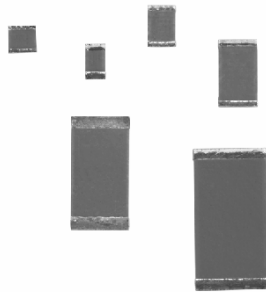


# THICK FILM CHIP RESISTORS

## CHP, HCHP Hybrid



### High-Stability Resistor Chips with Thick Film Technology



Vishay Sfernice thick film resistor chips are specially designed to meet very stringent specifications in terms of reliability, stability < 0.25 % at Pn at + 70 °C during 1000 h, homogeneity, reproducibility and quality.

They conform to specifications NFC 83-240 and MIL-R-55342 D.

Evaluated to ESCC 4001/026 (see CHPHR datasheet).

#### FEATURES

- Robust terminations
- Large ohmic value range 0.1 Ω to 100 MΩ
- Tight tolerance to 0.5 %
- CHP: Standard passivated version for industrial, professional and military applications
- HCHP: For high frequency applications
- ESCC approved see CHPHR
- SMD wraparound chip resistor
- Halogen-free according to IEC 61249-2-21 definition
- Withstand moisture resistance test of AEC-Q200
- Compliant to RoHS directive 2011/65/EU



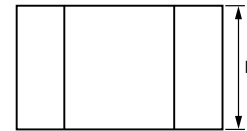
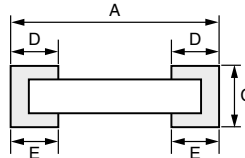
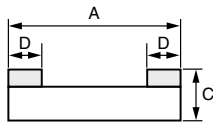
**RoHS\***  
COMPLIANT  
HALOGEN  
**FREE**

Sputtered Thin Film terminations, with nickel barrier, are very convenient for high operating conditions. They can withstand thousands of very severe thermal shocks.

B (W/A), N (W/A) and F (one face) types are for solder reflow assembly.

G (W/A) and W (one face) types are for wire bonding, gluing and even high temperature solder reflow.

#### DIMENSIONS in millimeters (inches)



CASE SIZE	A		B		C		D/E	
	VALUE	TOL.	VALUE	TOL.	VALUE	TOL.	VALUE	TOL.
0502	1.27 (0.050)	0.152 (0.006)	0.60 (0.024)	0.127 (0.005)	0.5 (0.020)	0.127 (0.005)	0.38 (0.015)	0.127 (0.005)
0505	1.27 (0.050)	0.152 (0.006)	1.27 (0.050)	0.127 (0.005)	0.5 (0.020)	0.127 (0.005)	0.38 (0.015)	0.127 (0.005)
0603	1.52 (0.060)	0.152 (0.006)	0.85 (0.033)	0.127 (0.005)	0.5 (0.020)	0.127 (0.005)	0.38 (0.015)	0.127 (0.005)
0705/ 0805	1.91 (0.075)	0.152 (0.006)	1.27 (0.050)	0.127 (0.005)	0.5 (0.020)	0.127 (0.005)	0.38 (0.015)	0.127 (0.005)
1005	2.54 (0.100)	0.152 (0.006)	1.27 (0.050)	0.127 (0.005)	0.5 (0.020)	0.127 (0.005)	0.38 (0.015)	0.127 (0.005)
1206	3.05 (0.120)	0.152 (0.006)	1.70 (0.067)	0.127 (0.005)	0.5 (0.020)	0.127 (0.005)	0.38 (0.015)	0.127 (0.005)
1505	3.81 (0.150)	0.152 (0.006)	1.32 (0.052)	0.127 (0.005)	0.5 (0.020)	0.127 (0.005)	0.38 (0.015)	0.127 (0.005)
2010	5.08 (0.200)	0.152 (0.006)	2.54 (0.100)	0.127 (0.005)	0.5 (0.020)	0.127 (0.005)	0.38 (0.015)	0.127 (0.005)
1020	2.54 (0.100)	0.152 (0.006)	5.08 (0.200)	0.127 (0.005)	0.5 (0.020)	0.127 (0.005)	0.38 (0.015)	0.127 (0.005)
2208	5.58 (0.220)	0.152 (0.006)	2.00 (0.079)	0.127 (0.005)	0.5 (0.020)	0.127 (0.005)	0.38 (0.015)	0.127 (0.005)
2512	6.35 (0.250)	0.152 (0.006)	3.30 (0.130)	0.127 (0.005)	0.5 (0.020)	0.127 (0.005)	0.38 (0.015)	0.127 (0.005)
1010	2.54 (0.100)	0.152 (0.006)	2.54 (0.100)	0.127 (0.005)	0.5 (0.020)	0.127 (0.005)	0.38 (0.015)	0.127 (0.005)

Revision 15-Set-10

\* Pb containing terminations are not RoHS compliant, exemptions may apply

Resistors - Thick Film, Robust Terminations