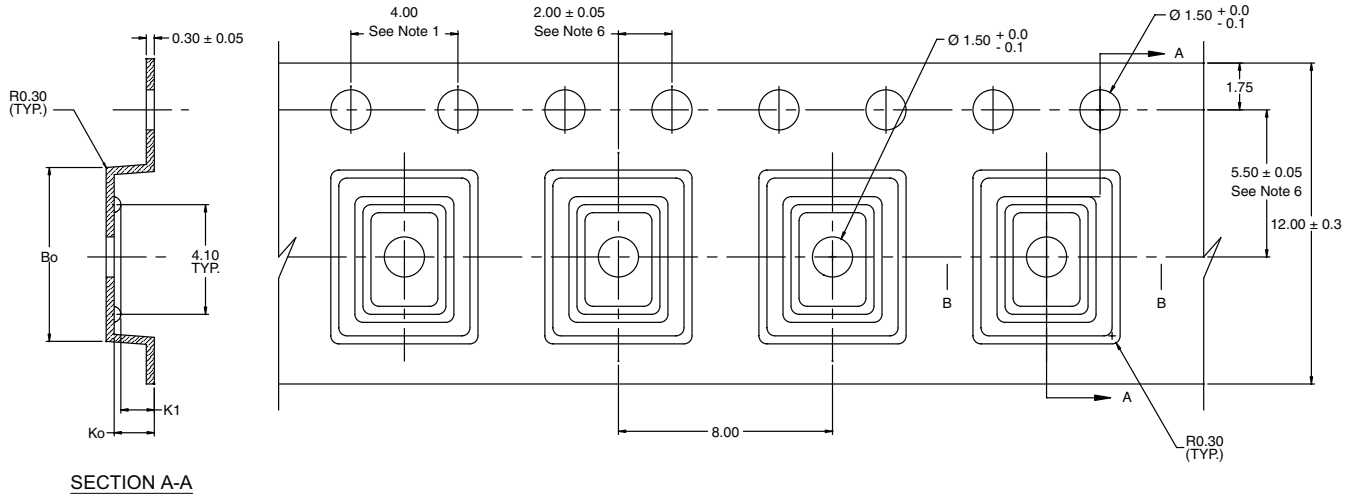
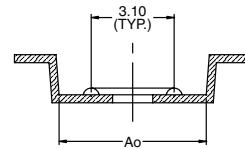


## PolarPAK® CARRIER TAPE



SECTION A-A



SECTION B-B

$A_0 = 5.50 \text{ mm}$   
 $B_0 = 6.50 \text{ mm}$   
 $K_0 = 1.55 \text{ mm}$   
 $K_1 = 1.25 \text{ mm}$

### Notes

1. 10 sprocket hole pitch cumulative tolerance  $\pm 0.2$ .
2. Camber not to exceed 1 mm in 100 mm.
3. Material: Advantek Polycarbonate.
4.  $A_0$  and  $B_0$  measured on a plane 0.3 mm above the bottom of the pocket.
5.  $K_0$  measured from a plane on the inside bottom of the pocket to the top surface of the carrier tape.
6. Pocket position relative to sprocket hole measured as true position of pocket, not pocket hole.

VERSION	QUANTITY PER REEL
T1	3000
ECN: S-72682-Rev. G, 14-Jan-08	
DWG: 93-5236-x	