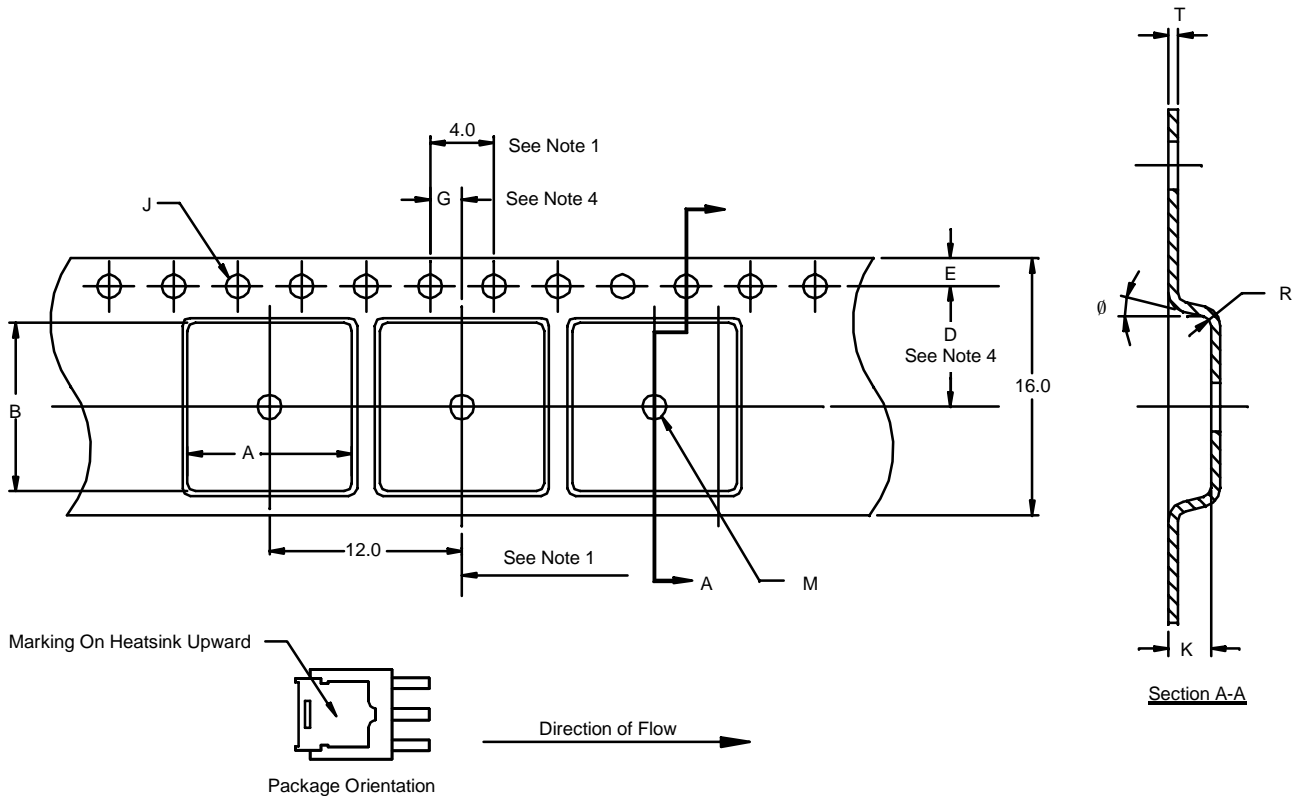


TO-252 (DPAK) REVERSE LEAD (T1 METHOD)



NOTES:

1. 10 sprocket hole pitch cumulative tolerance ± 0.2 .
2. Camber not to exceed 1 mm in 100 mm.
3. Material: 1 Static dissipative black polystyrene.
4. Pocket position relative to sprocket hole measured as true position of pocket, not pocket hole.
5. Centerline of the component cavity is to be locate midway between a pair of sprocket holes.
6. All sizes in mm unless specified.

QUANTITY PER REEL	
T1	2000
ECN: S-41165—Rev. I, 02-Aug-04 DWG: 90-2339-1	