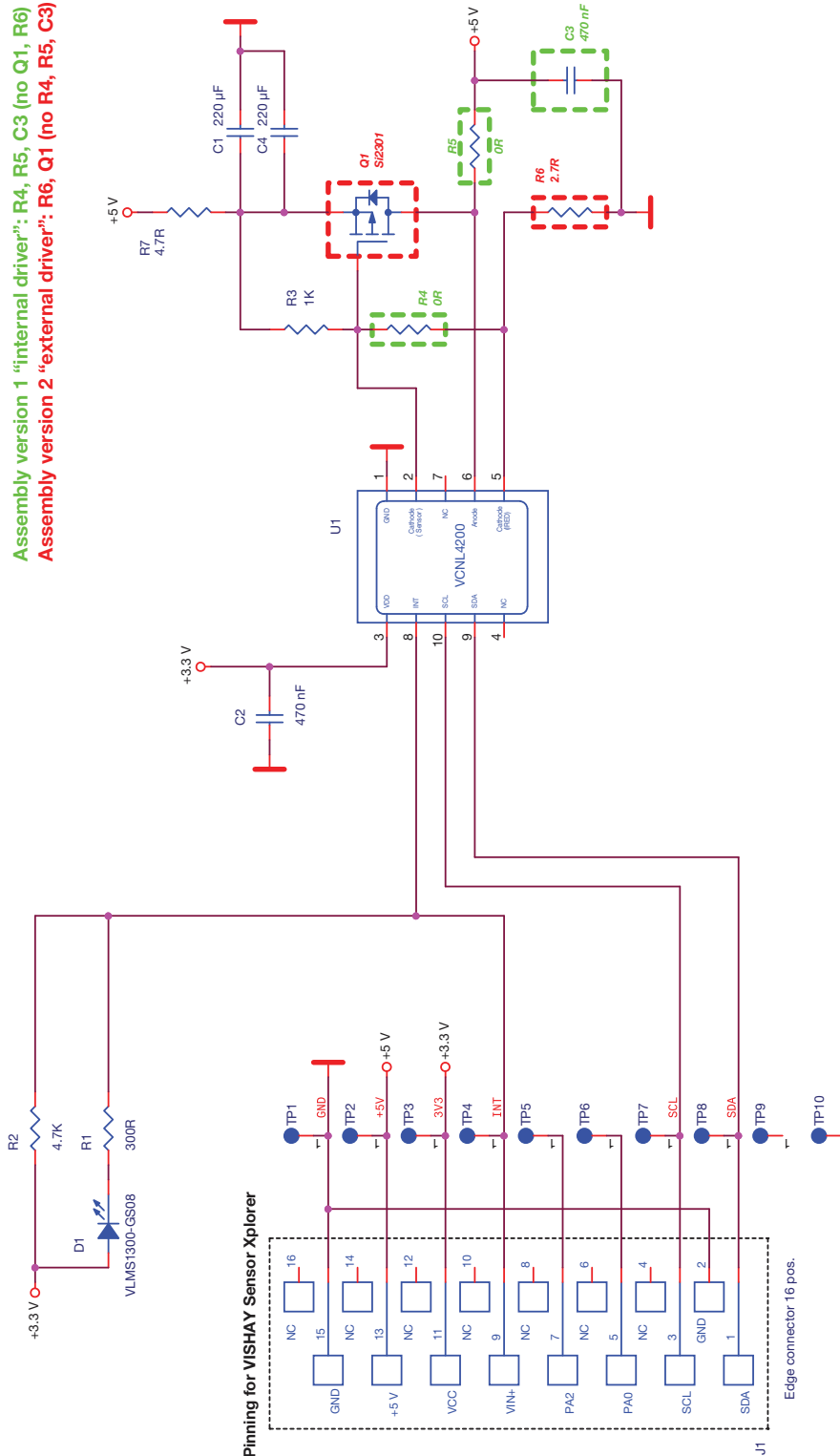


## VCNL4200 Sensor Board

### SCHEMATIC

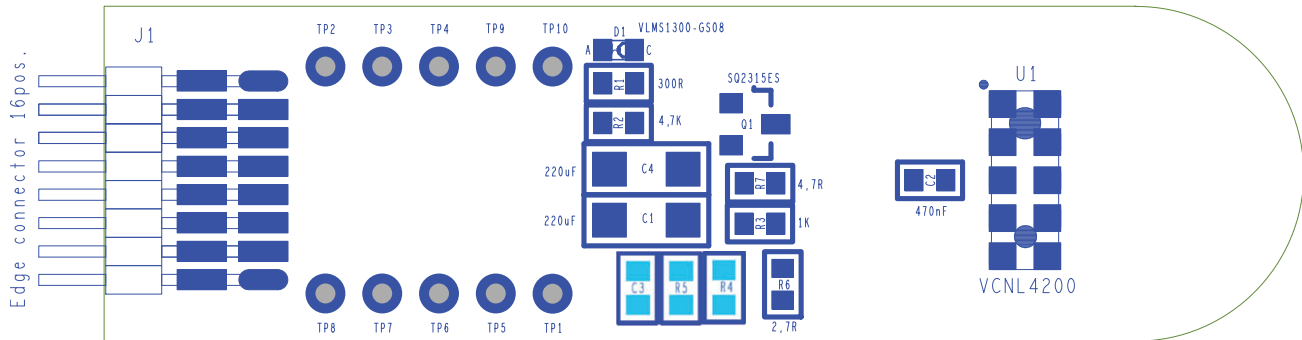


When using the VCNL4200 sensor board without Vishay SensorExplorer™ an additional pullup resistor (2.4 kΩ to 10 kΩ) on SDA and SCL is necessary



## ASSEMBLY

VCNL4200 sensor board, rev. 1.0



Assembly top, version 2 (R6, Q1, no R4, R5, C3)

BILL OF MATERIALS					
ITEM	QUANTITY	REFERENCE	COMPONENT CLASS	VALUE	PACKAGE
1	1	C1	Capacitor NP	220 $\mu$ F	SMC1206
2	1	C2	Capacitor NP	470 nF	SMC0603
3	1	C4	Capacitor NP	220 $\mu$ F	SMC1206
4	1	D1	LED red	VLMS1300	SMD0603
5	1	R1	Resistor	300 $\Omega$	SMR0603
6	1	R2	Resistor	4.7 k $\Omega$	SMR0603
7	1	R3	Resistor	1 k $\Omega$	SMR0603
8	1	R6	Resistor	2.2 $\Omega$	SMR0603
9	1	R7	Resistor	4.7 $\Omega$	SMR0603
10	1	Q1	Transistor	Si2301	Si2301
11	1	U1	Sensor	VCNL4200	SMD
12	1	J1	Edge connector	2 x 8 pos.	SMD header strip